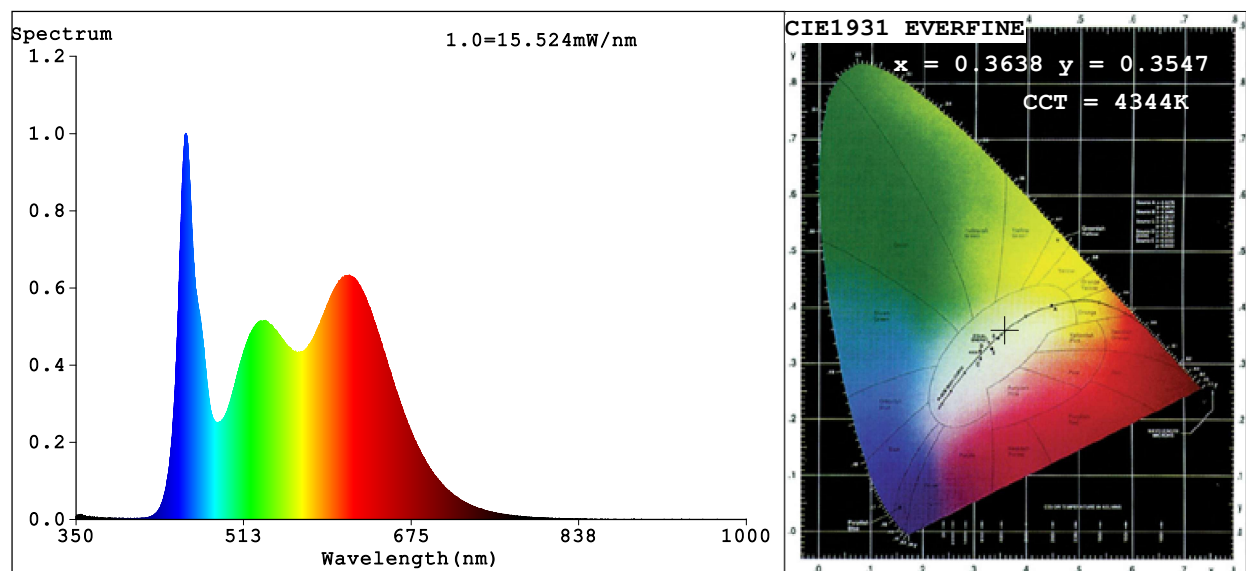


Spectrum Test Report



Color Parameters:

Chromaticity Coordinate: $x=0.3638$ $y=0.3547$ $u'=0.2229$ $v'=0.4890$

CCT=4344K (Duv=-0.0054) Dominant WL:Ld =582.5nm Purity=15.6%

Ratio:R=20.9% G=74.1% B=5.0%; Peak WL:Lp=456.4nm FWHM=22.9nm

Render Index:Ra=94.0 CRI=92.0 TM30:Rf=90 Rg=101

R1 =93 R2 =95 R3 =98 R4 =96 R5 =94 R6 =91 R7 =92

R8 =92 R9 =90 R10=94 R11=95 R12=68 R13=92 R14=98 R15=94

Photo Parameters:

Flux = 547.7 lm Eff. : 107.65 lm/W Fe = 1.861 W

Electrical parameters:

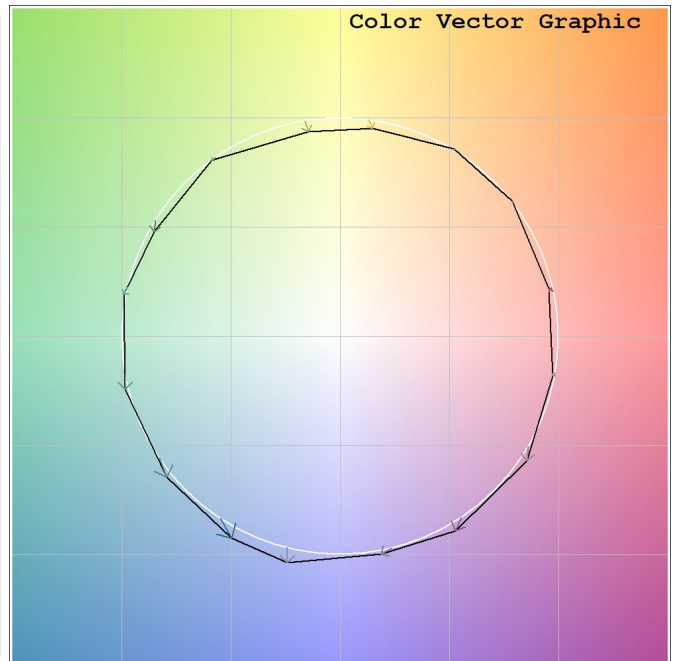
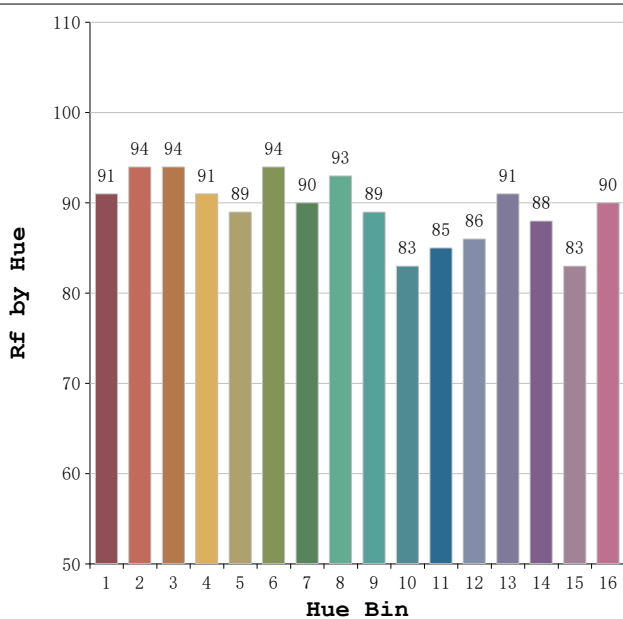
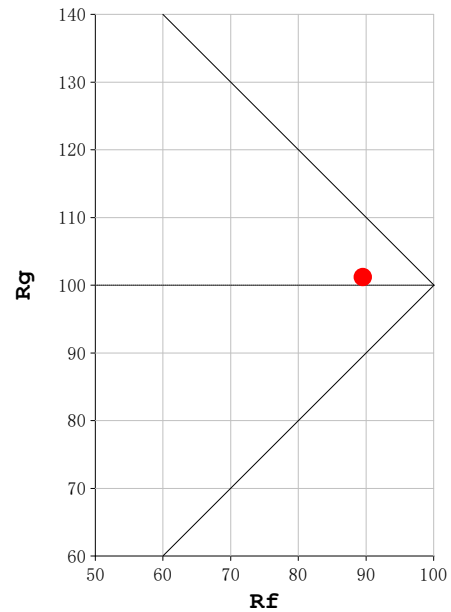
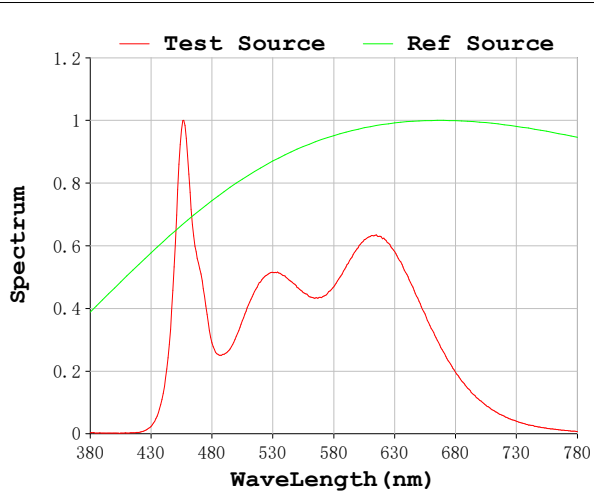
V = 23.998 V I = 0.2120 A P = 5.088 W PF = 1.000

Status: Integral T = 1639 ms Ip = 48004 (73%)

Model:Ecoled Palma 4200K
Tester:Sergio Carneros
Temperature:27Deg
Manufacturer:Luz Negra S.L

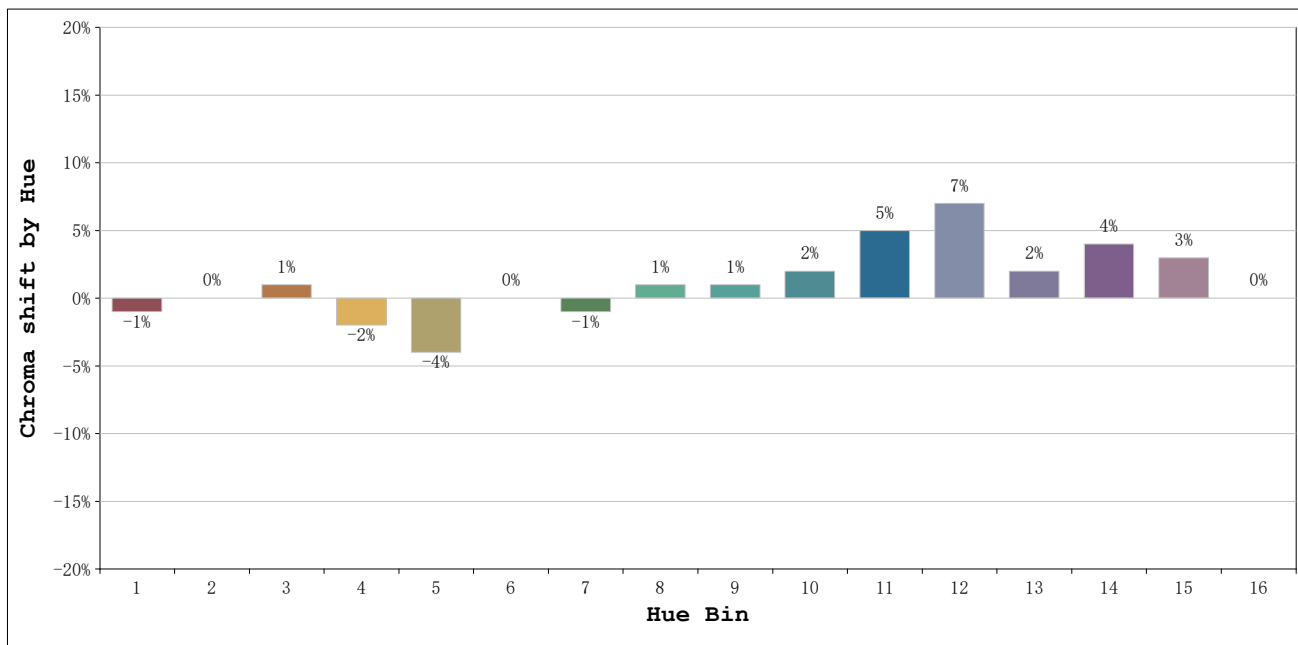
Number: 33.005
Date:02-06-2026
Humidity:57%
Remarks:100cm de tira flexible

Rf: 90 **CCT: 4344 K** **u': 0.2229**
Rg: 101 **Duv: -0.0054** **v': 0.4890**



Model:Ecoled Palma 4200K
 Tester:Sergio Carneros
 Temperature:27Deg
 Manufacturer:Luz Negra S.L

Number: 33.005
 Date:02-06-2026
 Humidity:57%
 Remarks:100cm de tira flexible



			Graphic shift(%)	
Hue Bin	Hue Angle	Rf	Chroma	Hue
1	0.0° - 22.5°	91	-1	2
2	22.5° - 45.0°	94	0	1
3	45.0° - 67.5°	94	1	0
4	67.5° - 90.0°	91	-2	-2
5	90.0° - 112.5°	89	-4	0
6	112.5° - 135.0°	94	0	2
7	135.0° - 157.5°	90	-1	4
8	157.5° - 180.0°	93	1	3
9	180.0° - 202.5°	89	1	7
10	202.5° - 225.0°	83	2	9
11	225.0° - 247.5°	85	5	9
12	247.5° - 270.0°	86	7	1
13	270.0° - 292.5°	91	2	-4
14	292.5° - 315.0°	88	4	-5
15	315.0° - 337.5°	83	3	-5
16	337.5° - 360.0°	90	0	-1

Model:Ecoled Palma 4200K
 Tester:Sergio Carneros
 Temperature:27Deg
 Manufacturer:Luz Negra S.L

Number: 33.005
 Date:02-06-2026
 Humidity:57%
 Remarks:100cm de tira flexible